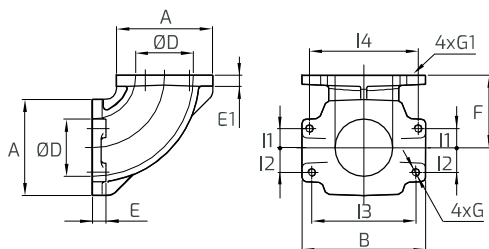


## MANIFOLD COLLETTORE SERIES/SERIE CK

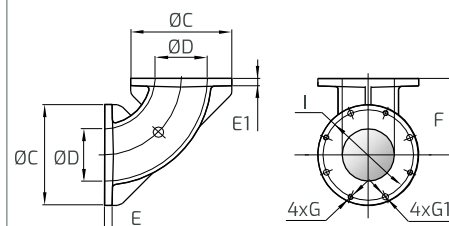
For blower  
Per soffianti **K/e**



CK4 / CK5 / CK



CK8 / CK9 / CK10

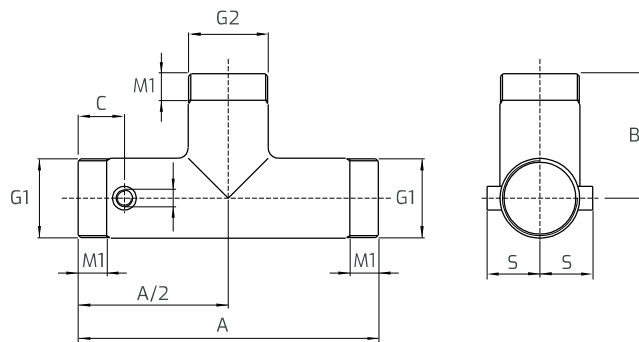


### Dimensions \ Ingombri

Mod	DN	A (mm)	B (mm)	ØC (mm)	ØD (bar)	E (mbar)	E1 (mbar)	F (mbar)	4xG (mbar)	4xG1 (mbar)	I (mbar)	I1 (mbar)	I2 (mbar)	I3 (mbar)	I4 (mbar)	Weight Peso (g)
<b>CK5</b>	40	80	100	-	43	11,5	7,0	56	M6	7	-	17,6	17,6	85	85	0,50
<b>CK6</b>	50	92	118	-	55	13,0	10,5	69	M8	9	-	18,3	23,8	99,4	104	0,70
<b>CK8</b>	80	-	-	145	75	10,5	10,5	110	M8	9	130	-	-	-	-	1,37
<b>CK9</b>	100	-	-	165	90	10,5	10,5	132	M8	9	150	-	-	-	-	1,77
<b>CK10</b>	125	-	-	220	128	10,5	10,5	192	M8	9	190	-	-	-	-	3,82

## VALVE HOLDER PORTAVALVOLA SERIES/SERIE PV

For valves  
Per valvole **VRL**



### Dimensions \ Ingombri

Mod	DN	A (mm)	B (mm)	C (mm)	2xG (?)	G1 (?)	G2 (mm)	M1 (mm)	M2 (mm)	S (mm)	Weight/Peso (Kg)
<b>PV56</b>	40	325	95	83	G <sup>1/4</sup> "	G1" 1/2	G2"	15	21,5	40	1,73
<b>PV66</b>	20	27	G <sup>3/4</sup> "	100	G <sup>1/4</sup> "	G2"	G2"	-	-	4	0,12
<b>PV86</b>	25	32	-	35	G <sup>1/4</sup> "	G3"	G2"	6,5	-	1	0,06
<b>PV88</b>	32	42	-	35	G <sup>1/4</sup> "	G3"	G3"	6,5	-	1	0,07
<b>PV96</b>	32	42	-	35	G <sup>1/4</sup> "	G4"	G2"	6,5	-	1	0,07
<b>PV98</b>	40	48	-	35	G <sup>1/4</sup> "	G4"	G3"	6,5	-	1	0,10
<b>PV99</b>	40	48	-	35	G <sup>1/4</sup> "	G4"	G4"	6,5	-	1	0,10
<b>PV109</b>	50	60	-	35	G <sup>1/4</sup> "	G5"	G4"	6,5	-	1	0,12